

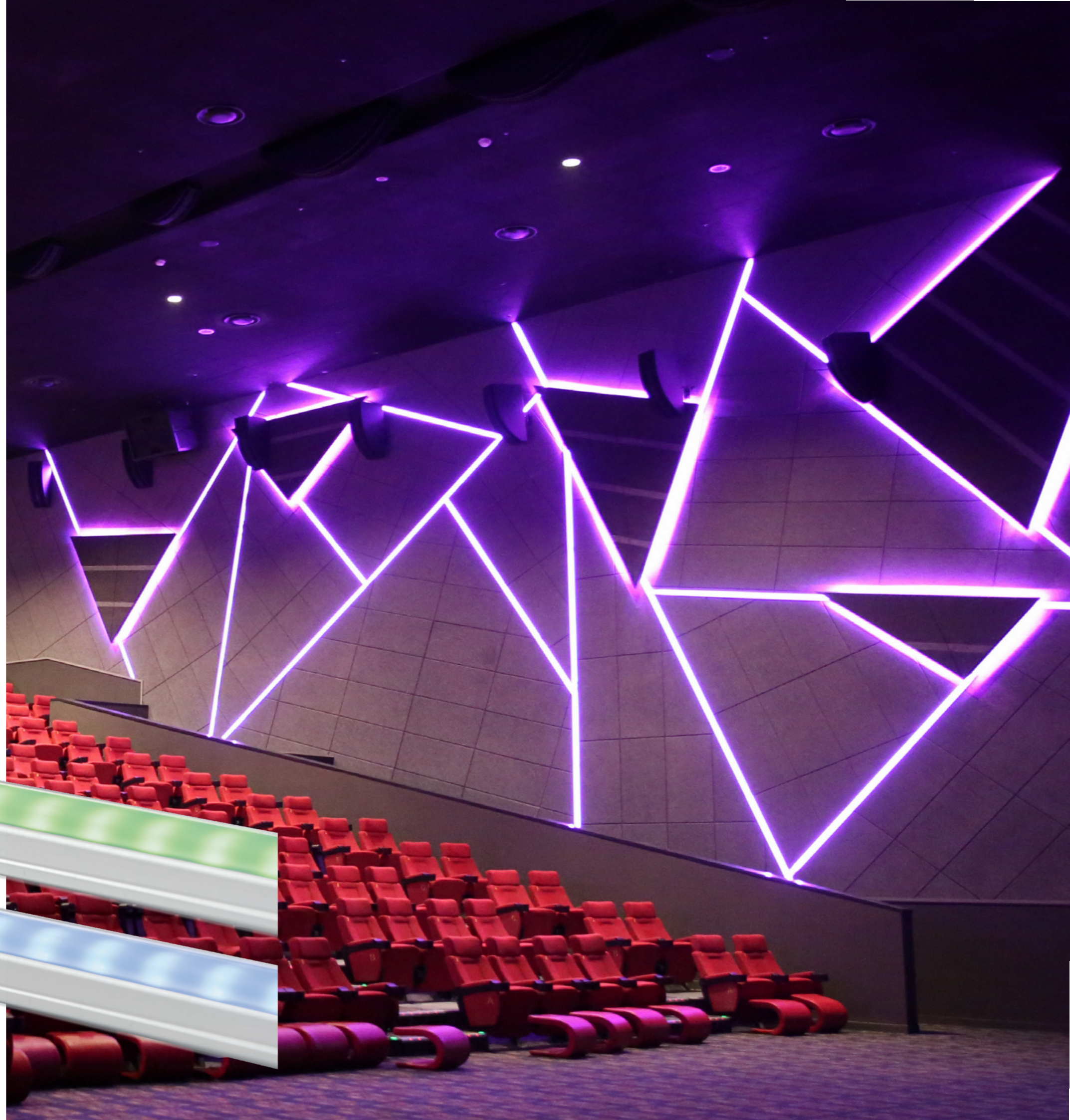
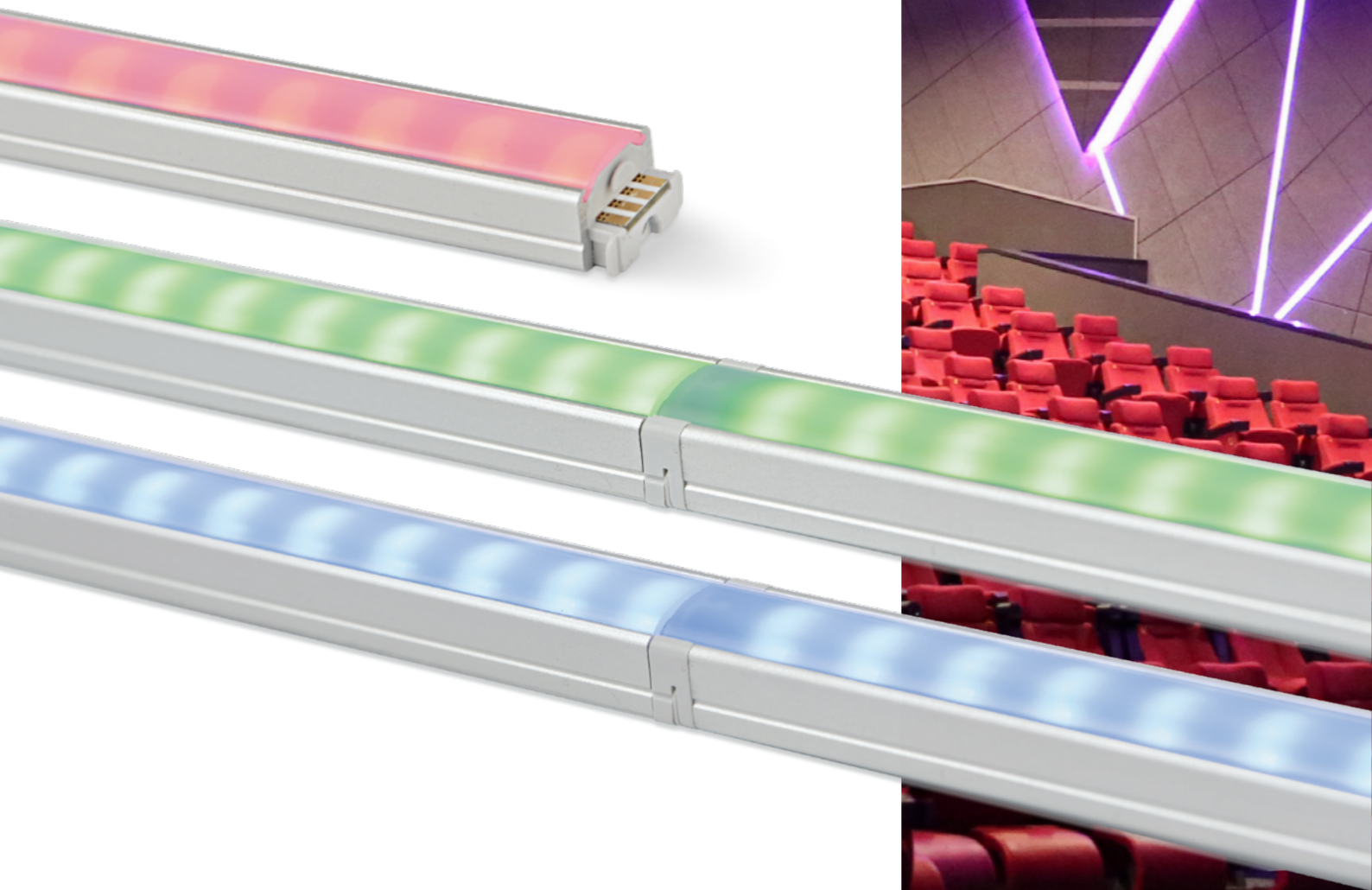
## FLX Stix RDV

LED for Display, Cabinet, Furniture & Cove

Color Changing LED!



- Super slim linear LED with RGB color changing output
- Quick connection system between fixtures
- Many lengths available
- Various mounting methods including magnetic
- To be used with constant voltage DC 24V driver
- Dimmable with available accessories





**FLX Stix RDV**  
RGB Color changing



RDV6 / FLX Stix RDV 6W Length (285mm)

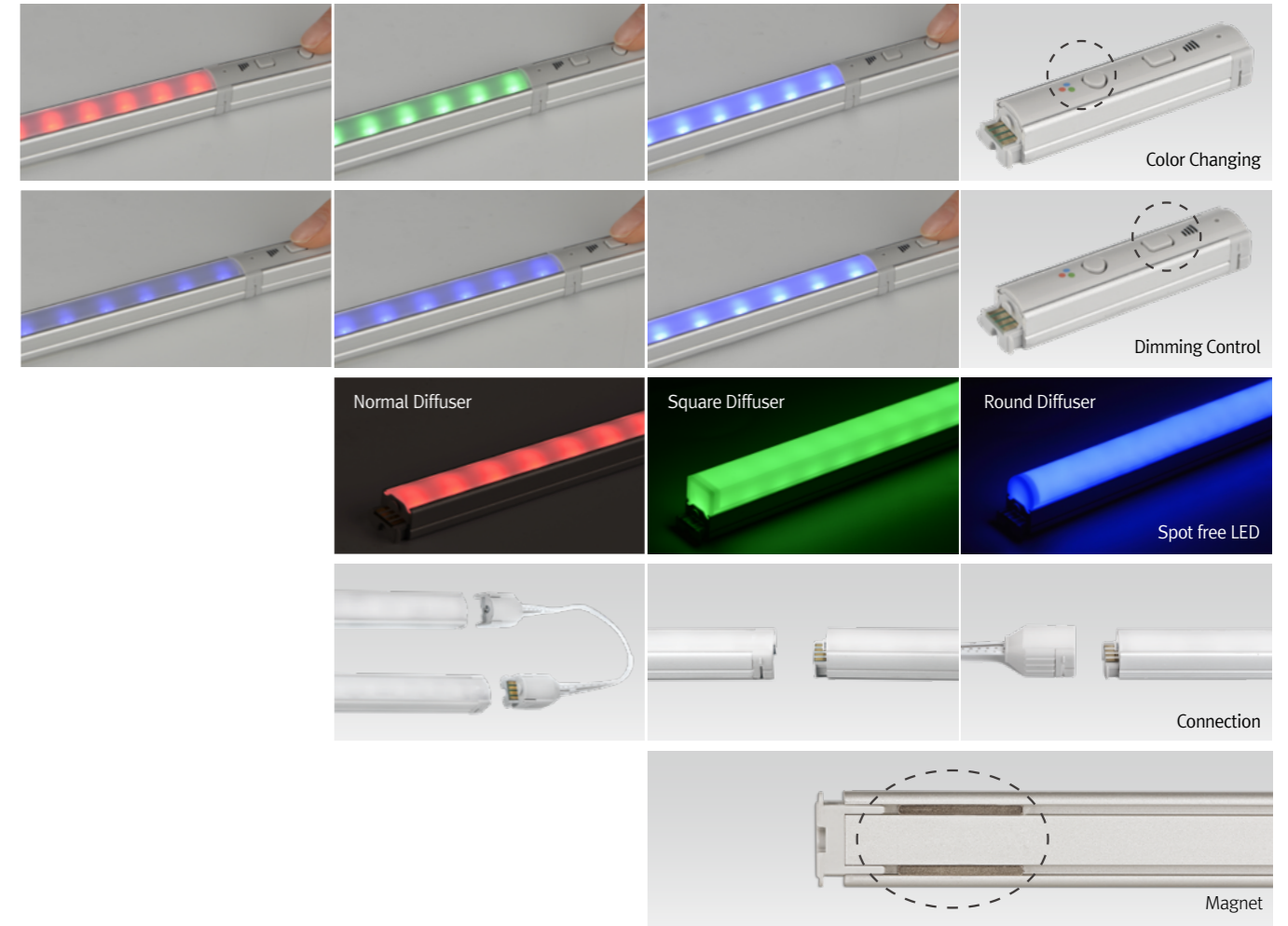


RDV12 / FLX Stix RDV 12W Length (565mm)

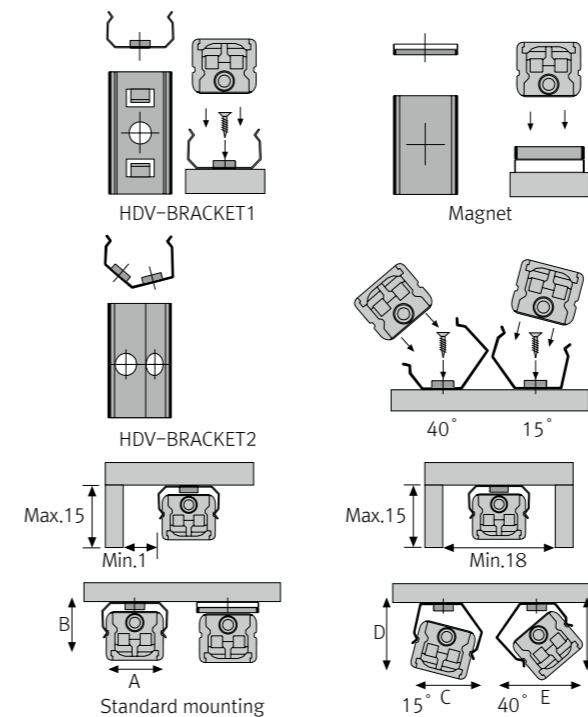


RDV18 / FLX Stix RDV 18W Length (845mm)

**Various options**



**Installation**



**Max. connection**

- FLX Stix DDV : 75W in one row (single power feed)
- LED Driver

LED Driver Model Name	Max. units for LED Driver		
	24V/30W	24V/75W	24V/200W
RDV6 RGB-24V	5	12	27
RDV12 RGB-24V	2	6	14
RDV18 RGB-24V	1	4	9

- W/ Bracket

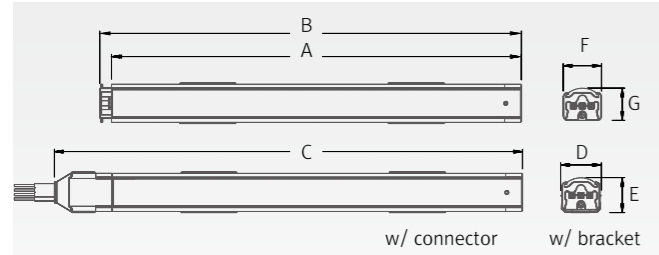
	A(mm)	B(mm)	C(mm)	D(mm)	E(mm)	F(mm)
Standard	16.8	14.2	17.5	16.5	19.1	17.5
Round type	16.8	22.1	18.8	24.4	23.4	22.9
Square type	16.8	22.6	21.3	26.2	25.7	25.7

**Specification**

Model Name	Power Input	Lamp Power	Color Temperature	Operating Temperature	IP
RDV6 RGB-24V	DC 24V	6 W	R · G · B	0 ~ 45°C	IP20
RDV12 RGB-24V	DC 24V	12 W	R · G · B	0 ~ 45°C	IP20
RDV18 RGB-24V	DC 24V	18 W	R · G · B	0 ~ 45°C	IP20

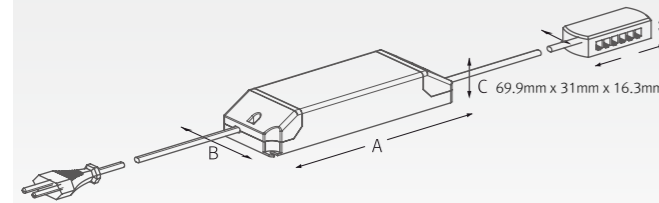
**Dimension**

Model Name	Power Input (V)	Lamp Power (W)	A (mm)	B (mm)	C (mm)	D (mm)	E (mm)	F (mm)	G (mm)
RDV6 RGB-24V	DC 24	6	280	285	302	16	14	15	12.5
RDV12 RGB-24V	DC 24	12	560	565	582	16	14	15	12.5
RDV18 RGB-24V	DC 24	18	840	845	862	16	14	15	12.5

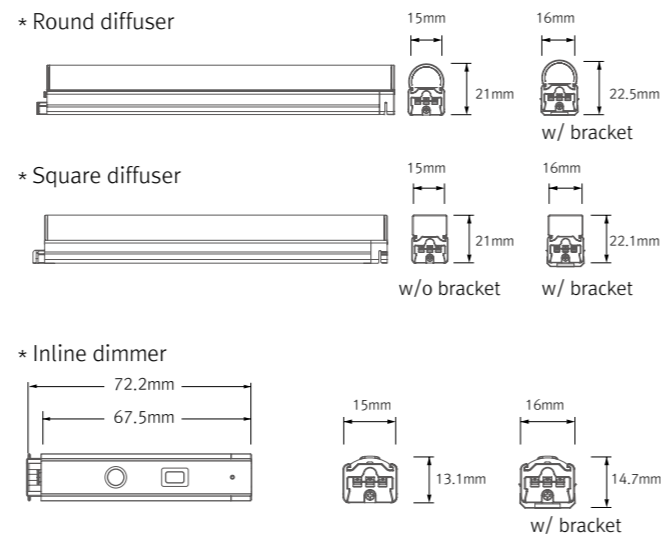
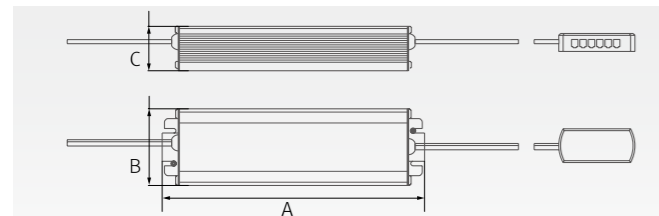


Model Name	A (mm)	B (mm)	C (mm)
FLC30-24V/T	150	41	31
FLC75-24V-P/T	180	60	32

**\* LED Driver**



Model Name	A (mm)	B (mm)	C (mm)
FLC200-24V/T	228	68	39



**Accessories**

**Ⓐ Connecting cables (Between FLX Stix RDV & FLX Stix RDV)**

RDVPTC	RDVPTC1	RDVPTC2	RDVPTC4	RDVPTC6
150mm(6inch)	300mm(1feet)	600mm(2feet)	1,200mm(4feet)	1,800mm(6feet)



**Ⓑ Power cable : RDVPC (2,500mm)**

Power cable (Between FLX Stix RDV & 12-way distributor)



**Ⓒ Mounting bracket : HDV-BRACKET1**

HDV-BRACKET1(A) : 1set = 2pcs  
HDV-BRACKET1(B) : 1set = 3pcs



**Ⓓ Angle bracket (15° & 40°) : HDV-BRACKET2**

HDV-BRACKET2(A) : 1set = 2pcs  
HDV-BRACKET2(B) : 1set = 3pcs



**Ⓔ Sidefeed for seamless extension (6W) : RDV6 RGB-24V-S**

The dimension is the same as RDV6 RGB-24V  
Powered only through cable, no power supply on the input connector



**Ⓛ End cap : HDV - CAP**

Included in fixture



**Ⓜ LED Driver with 12way distributor, with power cord (1,800mm)**

Part No	FLC30-24V/T	FLC75-24V-P/T
Capacity	30W 24V	75W 24V



**Ⓨ LED Driver : FLC200-24V/T (200W, DC24V)**

LED Driver With 12way distributor



**Ⓩ Dimming Interface (DMX512)**

FDA-L5M : Max. 200W (50W/CH, 5CH)



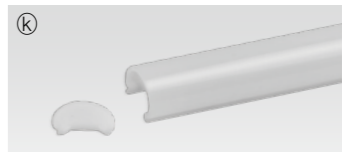
**ⓐ Inline dimmer : RDVDIM**

Max 75W in a row



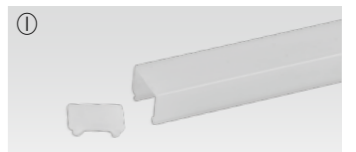
**ⓑ Round diffuser**

HDV6CVRM	HDV12CVRM	HDV18CVRM
6W	12W	18W



**ⓓ Square diffuser**

HDV6CVSM	HDV12CVSM	HDV18CVSM
6W	12W	18W



# *Light Creatures in the Night*

LED for Outdoor installation \_ FLX Stix ODV

