

MonoRail Spot HO

LED for Display, Cabinet, Furniture

Slide and Swivel High Output LED Spotlight



- Compatible and linkable with MonoRail system
- Slide and Swivel High Output LED Spotlight
- Suitable for furniture and showcase application
- Simple Plug & Play connection to the power track
- Available in silver or black
- To be used with constant voltage DC 24V driver

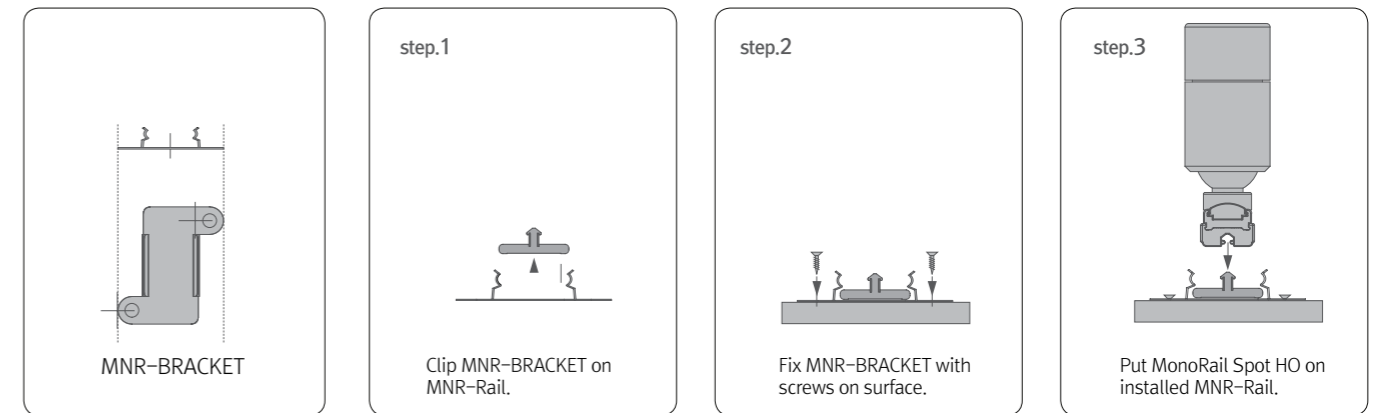




Various options



Installation



Max. connection

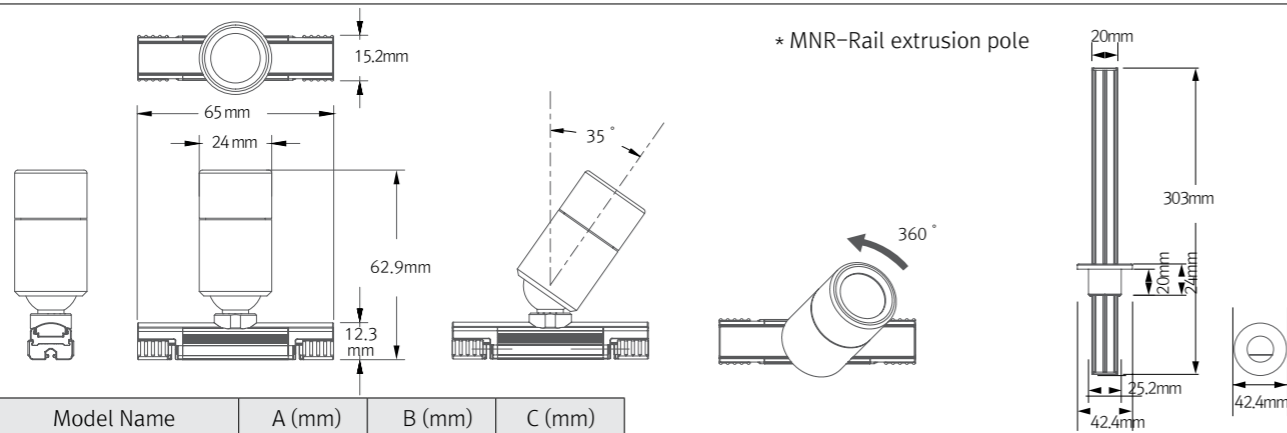
- MonoRail Spot HO: 180W in one row(Single powerfeed)
- LED Driver

| LED Driver Model Name | Max. units for LED Driver | | | |
|--------------------------|---------------------------|---------|---------|----------|
| | 24V/15W | 24V/30W | 24V/75W | 24V/200W |
| MRS3 40K-24V-SV | 5 | 11 | 28 | 76 |

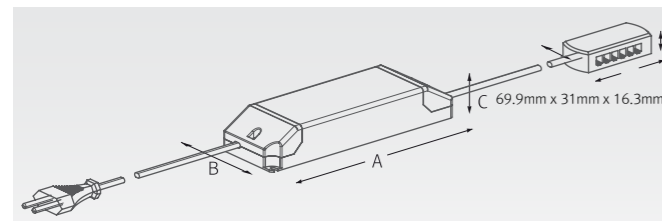
Specification

| Model Name | Color | Power Input | Lamp Power | Luminous Flux | Efficiency | Color Rendering | Available Color | Beam Angle | Operating Temperature |
|-----------------|--------|-------------|------------|---------------|------------|-----------------|------------------------------------|---------------|-----------------------|
| MRS3 40K-24V-SV | Silver | DC24V | 3W | 225 lm | 75 lm/W | Ra > 80 | 2,700K/3,000K/3,500K/4,000K/5,000K | 25°, 45°, 60° | 0-45°C |
| MRS3 40K-24V-BK | Black | DC24V | 3W | 225 lm | 75 lm/W | Ra > 80 | 2,700K/3,000K/3,500K/4,000K/5,000K | 25°, 45°, 60° | 0-45°C |

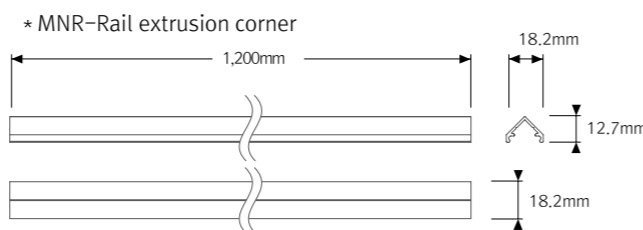
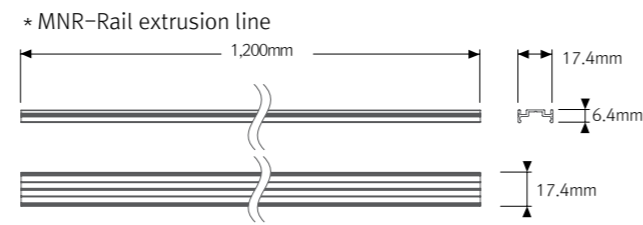
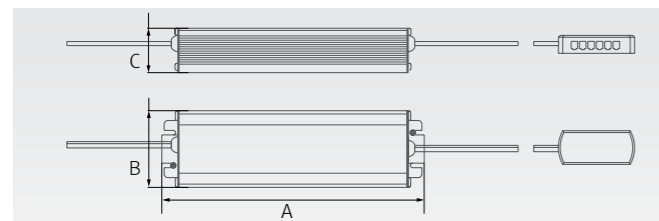
Dimension



| Model Name | A (mm) | B (mm) | C (mm) |
|-------------|--------|--------|--------|
| FLC15-24V/T | 121 | 45 | 16 |
| FLC30-24V/T | 150 | 41 | 31 |
| FLC75-24V/T | 180 | 60 | 32 |



| Model Name | A (mm) | B (mm) | C (mm) |
|--------------|--------|--------|--------|
| FLC200-24V/T | 228 | 68 | 39 |



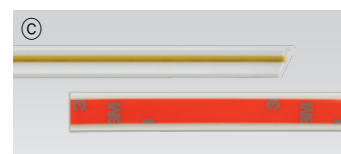
Accessories



| Beam angle | Silver | Black |
|------------|--------------------|--------------------|
| 25° | MRS3 40K-24V-SV-25 | MRS3 40K-24V-BK-25 |
| 45° | MRS3 40K-24V-SV-45 | MRS3 40K-24V-BK-45 |
| 60° | MRS3 40K-24V-SV-60 | MRS3 40K-24V-BK-60 |



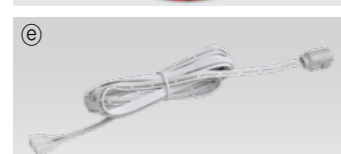
| Power supply track : MNR-Rail (20m) |
|-------------------------------------|
| Color : White, Gray, Black |



| Power supply track : MNR-Rail (1.2m) |
|--------------------------------------|
| Color : White, Gray, Black |



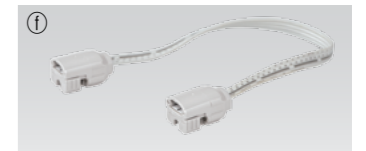
| Adhesive tape |
|------------------|
| MNR-Rail (16.5m) |



| Power supply cable to the MNR-Rail : MNRPC (2500mm) |
|---|
| 120W in one row (w/ terminal block) |
| 180W in one row (w/o terminal block) |

① Connecting cable between MNR-Rail

| MNRPTC | MNRPTC1 | MNRPTC2 | MNRPTC4 | MNRPTC6 |
|--------------|--------------|--------------|---------------|---------------|
| 150mm(6inch) | 300mm(1feet) | 600mm(1feet) | 1200mm(4feet) | 1800mm(6feet) |



⑨ LED Driver with 12way distributor, with power cord (1800mm)

| Part NO | FLC15-24V/T | FLC30-24V/T | FLC75-24V/T |
|----------|-------------|-------------|-------------|
| Capacity | 24V/15W | 24V/30W | 24V/75W |



⑥ LED Driver : FLC200-24V/T (200W 24V)

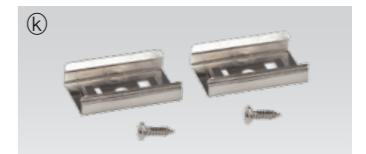
LED Driver With 12way distributor



① Bracket : MNR-BRACKET (standard)

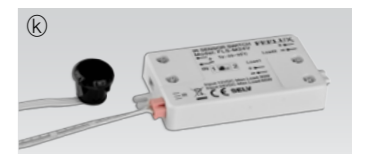


① Bracket : MNR-BRACKET1 (optional)



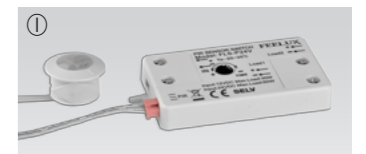
Ⓚ Door and motion detection sensor (DC) : FLS-M24V

Voltage : DC 24V



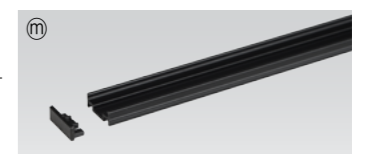
① Human-body detection sensor (DC) : FLS-P24V

Voltage : DC 24V



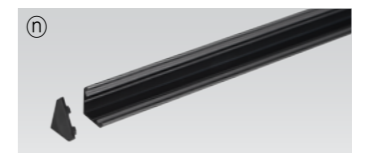
Ⓜ MNR-Rail extrusion line (1.2m)

| Silver | Black |
|------------------|------------|
| MNR-EXL-SV | MNR-EXL-BK |
| Without MNR-Rail | |



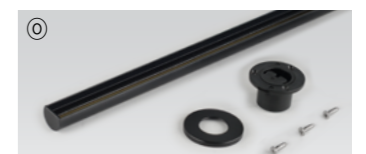
① MNR-Rail extrusion corner (1.2m)

| Silver | Black |
|------------------|------------|
| MNR-EXC-SV | MNR-EXC-BK |
| Without MNR-Rail | |



⑥ MNR-Rail extrusion pole (300mm)

| Silver | Black |
|---------------|------------|
| MNR-EXP-SV | MNR-EXP-BK |
| With MNR-Rail | |



⑥ End cap : MNR-CAP

Color : White, Gray, Black



① MNR-Rail protection cover : MNR-Rail cover

